

# PremierLabellers



## P2000-TE

The P2000-TE fully automatic carton labelling system has been designed to help pharmaceutical manufacturers comply with EU and FDA falsified medicine directives.

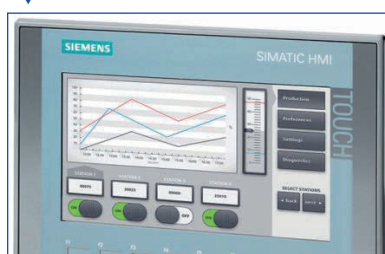
The P2000-TE is designed to apply security labels to the lateral folds of a carton and can be integrated with a camera system to read and verify 2D, 3D, datamatrix and human readable data for a complete track & trace solution.

# PremierP2000-TE

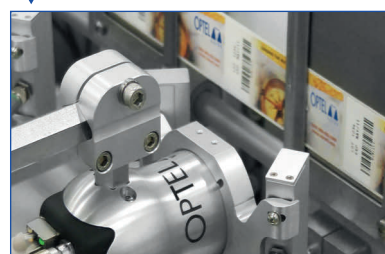
The P2000-TE features our unique auto carton width adjustment conveyor controlled from the HMI and combined with simple hand wheel adjustable label heads, reduces set-up time and increases repeatability in the changover process.



The Siemens S7-1200 PLC control system with large view touchscreen control stores upto 100 different product recipes for easy set-up. The system also provides a full set of machine state diagnostics for rapid fault finding.



Designed to be versatile the P2000-TE range of available options gives your business greater flexibility as it grows. A wide range of options are available for thermal inkjet coding and validation of machine and human readable data.



## Features

- Fully validated to meet FDA serialisation demands
- Siemens control system
- A & B grade print quality
- Quick changeover dials & scales
- Positive carton transport via toothed belts
- Integrated reject system
- Counter control system for rejected product
- +/- 1.0mm placement accuracy

## Technical Data

Max carton width	Upto 260mm*
Label Size	15mm - 40mm
Label Reel Size	300mm Ø / 76mm core
Max Speed	Upto 230 cartons per minute
Electrical	230V single phase 50/60Hz
Compressed air	60/80psi 6 bar
Overall Dimensions (LxWxH)	1700mm x 1400mm x 2000mm
Operating height	800mm - 900mm
Weight	Approx 300Kg

\* For special applications, please contact us for more information.

## Integrated Serialisation Package

- Thermal inkjet code printers
- Missing overprint detection
- Missing label detection
- OCV /OCR Verification
- Low label reel detection
- Barcode verification



[www.premierlabellers.co.uk](http://www.premierlabellers.co.uk)

PLF (UK) Ltd  
The Old Mercedes Building  
Unit 2 Bathside Bay  
Harwich, Essex CO12 3HF  
t: +44 (0)1255 553822 f: +44 (0)1255 241638  
sales@premierlabellers.co.uk